

2023
Annual Report



Contents

A message from the principal.....	3
2023 at a glance.....	4
Student Information.....	4
Staff Information.....	4
In 2023, Melville Primary School welcomed new staff:.....	5
We farewelled the following staff:.....	5
School Improvement.....	6
School Culture survey results.....	6
Public School Review.....	6
Student Achievement.....	7
National Quality Standard.....	7
Recommendations	7
Cracking the Code.....	7
On Entry.....	8
Achievement.....	8
PAT (Progressive Achievement Test).....	9
Reading.....	9
Maths.....	9
NAPLAN.....	10
(NATIONAL ASSESSMENT PROGRAM LITERACY AND NUMERACY).....	10
Year 3.....	10
Year 5.....	11
Achievement – Comparison to like schools.....	12
Progress – Comparison to like schools 2021-2023.....	13
Grade Allocation.....	13
Student Health and Wellbeing.....	13
Governance.....	14
School Board report.....	14
School P & C report.....	14
Men of Melville Primary School (MOMPS) report.....	16
School Resourcing.....	17
Melville Primary School Highlights.....	19
The Graduating Class of 2023.....	21

A message from the principal.

It is with great pleasure that I present the 2023 Annual Report to the Melville Primary School community. The report is a summary of the 2023 school year. I trust that you will find the report informative, and that it provides you with an overview of our school year.

2023 was a year of self-reflection, growth, and development on many levels at Melville Primary School. We had our results from the Schools Culture Survey in the areas of Quality Teaching, Student Achievement, Leadership, Relationships, Learning Environment and Resources. In addition, we underwent our 3 yearly Public-School Review in March 2023, where we were assessed against the Public-School review Standard in the same areas as the community survey. Both feedback platforms provided the direction for improvement at Melville Primary School. These results form part of this Annual Report. All recommendations have been used as the direction for our new 2024-2026 Business Plan.

At Melville Primary School, we strive to deliver evidenced based, high quality teaching practices that ensure that every student, every day can succeed. We believe that building staff capacity and being a part of a high performing team is the corner stone of school improvement. For students to have the best outcomes, we need to continue to build the capacity of teachers to ensure their practice has the highest impact on student learning.

We are developing a culture where whole school evidence-based practices are consistent across all classes ensuring a lower variance in teaching; therefore, less transition for students between classes and year levels.

In 2023, we launched our 3-year plan for our quality teaching strategy where all teachers will have professional learning in the Shaping Minds Research to Impact program. 7 teachers completed the program in 2023.

Our staff have been outstanding in reflecting on their current practice and planning improvements in line the Department of Education's Quality Teaching Strategy. Thank you to the staff of Melville PS who have gone above and beyond to make Melville PS the best it can be.

Our School Board and P&C provided outstanding support to our improvement journey, through resourcing, community engagement, information sessions, development of policy and procedures and advocating for our journey unequivocally. I would like to thank both the School Board members and P & C members who voluntarily and generously give their time to Melville Primary School.



Melanie Osborne

Principal

2023 at a glance.

Melville Primary School is located approximately 14 kilometres south of the Perth central business district in the South Metropolitan Education Region. The school has an Index of Community Socio-Educational Advantage of 1113 (decile 1). It currently enrolls 677 students from Kindergarten to Year 6. Melville PS is a member of the Riverside Network of schools which include Attadale PS, Kardinya PS, Palmyra PS, Carralee Community School, East Fremantle PS, North Fremantle PS, Bicton PS, Richmond PS, John Curtin College of the Arts and Melville SHS.

Student Information

2023 STUDENT CHARACTERISTICS	
ICSEA (Decile 1)	1113
Transiency rate	6.0%
Fulltime Students (PP-6)	611
Students with Disability	25 (3.6%)
Aboriginal Students	8 (1.2%)
Part time students (K)	74

The school's ICSEA has remained stable over the past 3 years.

Staff Information

		No.	FTE (Full Time Equivalent)	AB'L
Administration Staff	Principal	1	1.0	0
	Associate Principals	2	1.8	0
	Total Administration Staff	1	2.8	0
Teaching Staff	Level 3 Teachers	6	4.5	0
	Other Teaching Staff	36	28.3	0
	Total Teaching Staff	42	32.8	0
School Support Staff	Clerical / Administrative	5	3.1	0
	Gardening / Maintenance	1	0.5	0
	Other support staff	24	17.1	0
	Total School Support Staff	30	20.7	0
TOTAL STAFF		75	56.3	0

In 2023, Melville Primary School welcomed new staff:

- Kate Lowson (Science)
- Jude Jones – Teacher (Year 6)
- Emily Barr – Teacher (PP)
- Gulshan Price – Teacher (2nd Semester – Year 5)
- Holly Faulkner – Teacher (2nd Semester – Year 2)
- Gabby Edmonds – Teacher (2nd Semester – PP)
- Ngaire Houghton – Special needs education assistant

We farewelled the following staff:

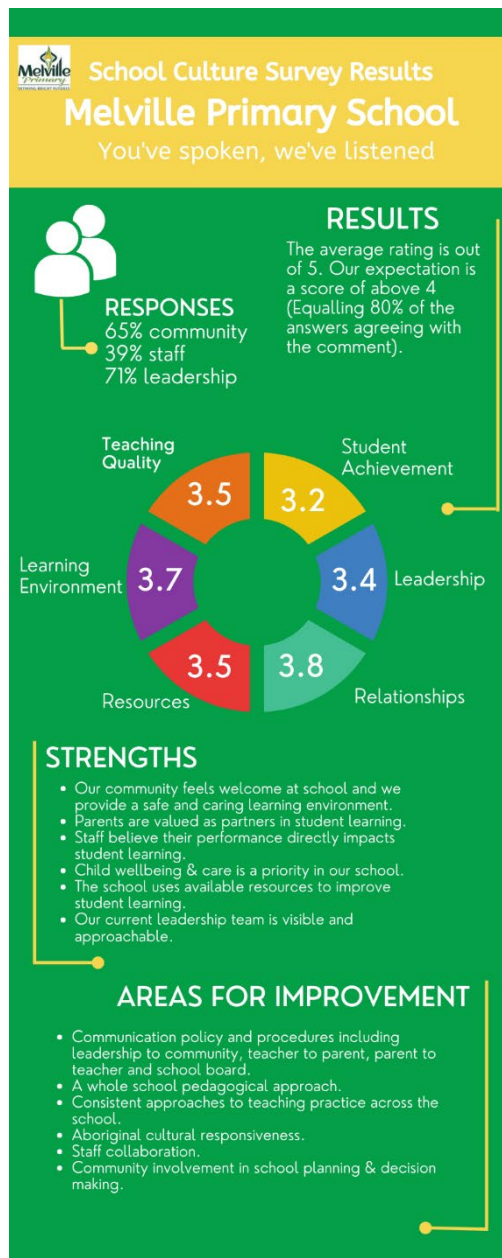
- Amanda Dunlevy (retiring)
- Helen Van Blommestein (retiring)
- Tanya Gore (retiring)
- Gabby Edmonds
- Adrian Eaton
- Gulshan Price
- Marisha Burnside
- Kate Mulvey
- Daniel Del Casale (fixed term)
- Ngaire Houghton
- Niamh Gallagher
- Emily Barr

We wish these staff all the absolute best in either their retirement or new positions and thank them for their contribution to the education of children at Melville Primary School.



School Improvement

School Culture survey results



Public School Review

In March 2023, we underwent our Public-School Review. We were assessed against our ability to meet the Public-School review standard in the domains, of teaching quality, student progress and achievement, relationships, resources, leadership and learning environment. We were deemed to have not met Leadership and Quality teaching and received a one-year return in those domains. Our full report can be found on our school's website.

<https://melvilleps.wa.edu.au/our-school/publications-and-reports/>

Student Achievement

National Quality Standard

Overall Quality Area recording		Working Towards (WT)	Meeting (M)
Quality Area 1	Educational program and practice		
Quality Area 2	Children's health and safety		
Quality Area 3	Physical environment		
Quality Area 4	Staffing arrangements		
Quality Area 5	Relationships with children		
Quality Area 6	Collaborative partnerships with families and communities		
Quality Area 7	Governance and Leadership		

Recommendations:

- Review our Early Childhood Philosophy to encompass practices K-2.
- Interrogate and share data to inform planning across the K-2 years.
- Embed whole school, evidenced based teaching practices in English and Maths across the K-2 years.

Cracking the Code

In 2023, we introduced a phonological awareness program in Kindy. The following data represents the 2022 cohort who were not taught the program compared to the 2023 cohort who were taught the program in Kindy.

% of students who met mastery level of key PA skills.					
	Syllables		Onset Rime		Phoneme
	1.1 Blending	1.2 Segmenting	2.3 Blending	2.4 Naming onset in CVC	3.1 Final Sound
2022	79%	58%	43%	74%	30%
2023	97%	79%	69%	84%	49%

Recommendations

- Continue the program in Kindy in 2024 and beyond.
- Develop the integrity and fidelity of the program through efficient classroom practise.

On Entry

Achievement

	Reading % of students at or above decile 1 mean	Numeracy % of students at or above decile 1 mean
Pre-primary	48%	53%
Year 1	50%	No data
Year 2	No data	No data

Pre-primary Reading

- MPS (Melville Primary School) cohort mean 467.
- Decile 1 schools mean 467.
- State mean 450.

We have increased our percentage of students at or above the Decile 1 mean by 10% from 2022.

Yr. 1 - Reading

- MPS cohort mean 530.
- Decile 1 schools mean 541.
- State mean 510.

Pre-primary Numeracy

MPS cohort mean 456.

Decile 1 schools mean 456.

State mean 435.

Our percentage of students at or above the Decile 1 mean has decreased by 2% from 2022.

Recommendations:

- Monitor achievement and progress towards improvement targets as outlined in 2024 – 2026 Business Plan.
- Implement evidence-based strategies in Kindergarten and Pre-Primary to achieve On-Entry Numeracy targets as outlined in the 2024-2026 Business Plan.
- Introduce a new reading assessment as part of whole school assessment schedule in Year 1 and 2 to track achievement and progress in reading from PP to Year 3 NAPLAN.
- Continue Tier 1 screening and response to intervention program for students who are identified at risk in reading in PP, Year 1, and Year 2 (Tier 2 students).

PAT (Progressive Achievement Test)

Reading

	Normed referenced group median scale score	MPS median scale score
Year 1	84.2	91.4
Year 2	101.1	110.1
Year 3	113	118.2
Year 4	120.9	123.7
Year 5	125.8	130.9
Year 6	128.8	133.2

Maths

	Normed referenced group median scale score	MPS median scale score
Year 1	99.5	102.3
Year 2	108.3	111.3
Year 3	115.4	118.1
Year 4	121.1	125.4
Year 5	125.5	128.8
Year 6	128.9	133.4

Comments: Melville Primary School is consistently above the referenced group median score in Reading and Maths in all year levels.

Recommendations:

- In 2024 implement PAT adaptive assessments trialled in 2023 which allows for personalised test pathways giving greater diagnostic power and greater reporting opportunities.
- In 2024, implement a whole school approach to Numeracy including the use of daily reviews and evidence-based strategies to achieve the targets as outlined in the 2023-2026 Business Plan.
- Continue to utilise Elastik to support staff in the data analysis of PAT assessments and as part of data triangulation.
- Planned PL (Professional Learning) for teachers utilising the Fremantle Language Development Centre in comprehension as part of work started in 2023 on 'The Big 6'.

NAPLAN

(NATIONAL ASSESSMENT PROGRAM LITERACY AND NUMERACY)

Year 3

Year 3 Reading			
Proficiency		Progress	
Needs Additional Support	7%	Very low	8%
Developing	17%	Low	13%
Strong	51%	Moderate	31%
Exceeding	25%	High	20%
		Very high	27%

Year 3 Maths			
Proficiency		Progress	
Needs Additional Support	6%	Very low	4%
Developing	16%	Low	8%
Strong	54%	Moderate	20%
Exceeding	24%	High	29%
		Very high	40%

Comments:

In reading, 76% of year 3 students achieve strong and exceeding proficiency and 47% of students' progress above a moderate level.

In maths 78% of year 3 students achieve strong and exceeding proficiency and 69% of students' progress above a moderate level.

Recommendations:

- Continue the implementation of Letters & Sounds across K-2. Utilise trainers to model, coach and provide PL for staff to ensure the program is being implemented with fidelity. Ensure ongoing monitoring using the Letters and Sounds tracking booklet.
- Introduce new fluency screening and embed reading fluency instructional routines PP-Year 6.
- Continue to work with the Fremantle LDC (Language Development Centre) to deliver professional learning for staff on all areas of the 'Big 6' of Reading.
- Implement High Impact Teaching strategies including learning intentions and success criteria and daily reviews across the school.

Year 5

Year 5 Reading			
Achievement		Progress	
Needs Additional Support	1%	Very low	No NAPLAN-to-NAPLAN progress or previous proficiency levels will be reported until 2025.
Developing	14%	Low	
Strong	55%	Moderate	
Exceeding	29%	High	
		Very high	

Year 5 Maths			
Proficiency		Progress	
Needs Additional Support	4%	Very low	No NAPLAN-to-NAPLAN progress or previous proficiency levels will be reported until 2025.
Developing	14%	Low	
Strong	54%	Moderate	
Exceeding	17%	High	
		Very high	

Comments:

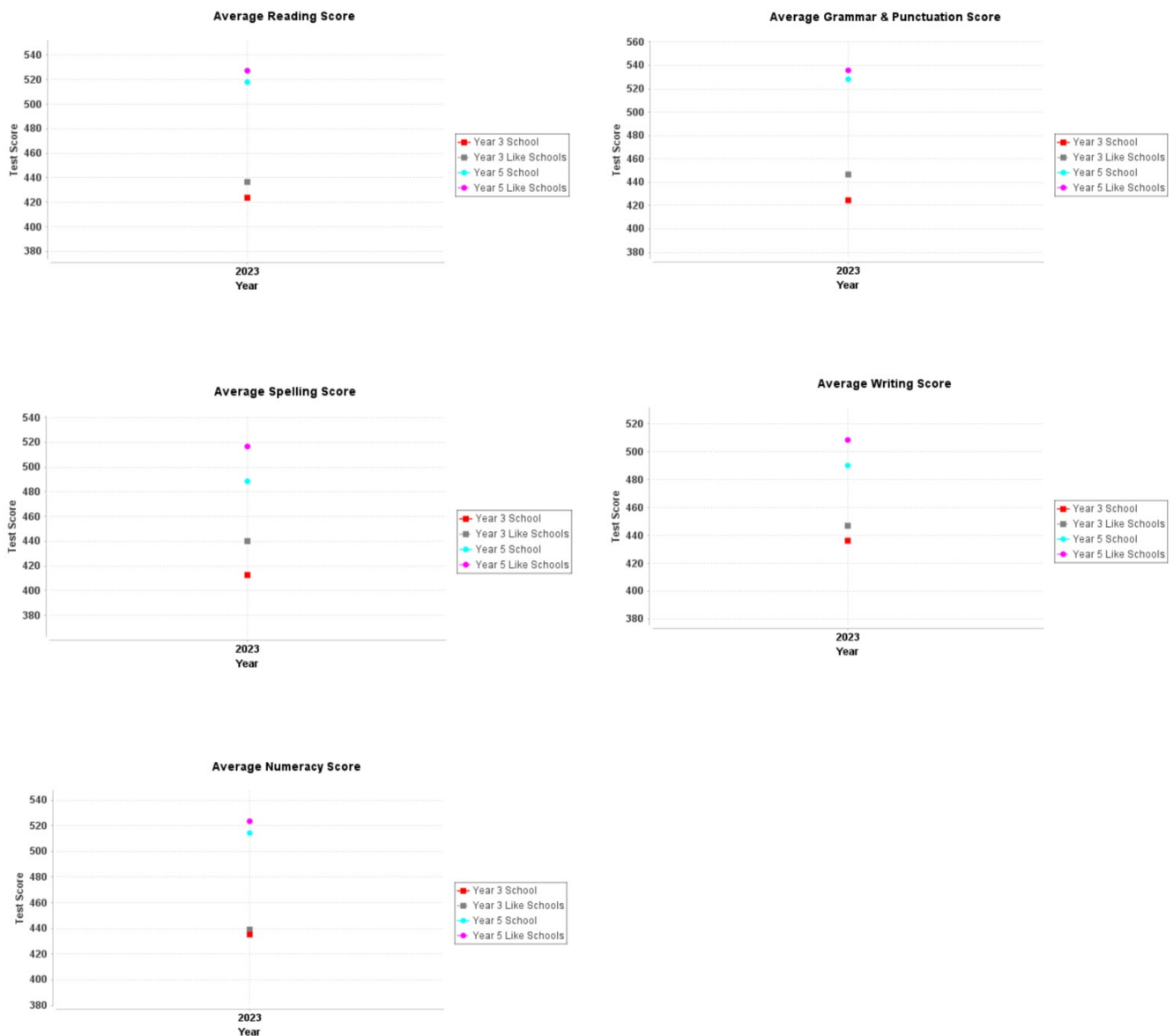
In reading 84% of year 5 students achieved strong and exceeding proficiency.

In maths 71% of year 5 students achieved strong and exceeding proficiency.

Recommendations:

- Utilise newly appointed Maths and English Coaches to drive school improvement through priorities identified in the 2024 Maths and English operational plans.
- Identify and train Cohort 2 of Teachers in High Impact Teaching strategies.
- Continue to develop the staff curriculum companion to ensure pedagogical approaches and assessment is consistent across the school.

Achievement - Comparison to like schools.



Comments:

System data shows that MPS is below like schools all areas in Reading (Yr. 3 & 5), Writing (Yr. 3 and 5), Spelling (Year 3 and 5) and Grammar & Punctuation (Yr. 3 & 5).

Recommendations

- Targets outlined in 2024-2026 Business Plan to increase the percentage of Year 5 students exceeding proficiency levels to 30%.
- Continue to embed high impact teaching strategies and whole school approaches across the school.
- Utilise instructional coaches in English and Maths to build capacity of teachers implementing evidence-based teaching strategies.

Progress - Comparison to like schools 2021-2023.

This progress data is not available to compare our progress between years 3 and 5 to like schools as NAPLAN was changed to from Term 2 to Term 1 in 2023. Progress will be able to be measured again in 2025.

Grade Allocation

NAPLAN alignment to Grade allocation is unavailable this year due to the NAPLAN proficiency bands changing.

Student Health and Wellbeing

	Non-Aboriginal			Aboriginal			Total		
	School	Like Schools	WA Public Schools	School	Like Schools	WA Public Schools	School	Like Schools	WA Public Schools
2021	95.1%	94.0%	92.4%	90.2%	83.2%	76.8%	93.8%	93.8%	91.0%
2022	90.9%	90.1%	88.3%	91.1%	77.3%	69.5%	89.9%	89.9%	86.6%
2023	92.8%	91.8%	90.3%	91.2%	83.2%	74.3%	92.8%	91.6%	88.9%

	Attendance Category			
	Regular	At Risk		
		Indicated	Moderate	Severe
2021	88.3%	10.0%	1.5%	0.2%
2022	66.6%	27.8%	4.2%	1.4%
2023	77.7%	18.4%	3.4%	0.5%
Like Schools 2023	70.4%	22.7%	5.6%	1.3%
WA Public Schools	61.0%	25.0%	10.0%	4.0%

2023 attendance rates remain above both like schools and WA Public Schools. In 2024, a conscious effort will focus on the 'indicated' attendance category. We plan to reduce our indicated attendance category percentage and increase our regular attendance category.

Attendance action plan.

- Individual case management – moderate/severe categories.
- Chaplain support.
- Parent Education regarding the benefits of regular attendance.

Governance

School Board report

In 2023 the School Board played a key role in contributing to school governance so that our school's resources were used efficiently, and community expectations and the school's priorities reflect the needs of students. Some of the matters the School Boards made decisions on in 2023 include:

- Fees, charges & book lists.
- Development of the school Business Plan.
- Monitoring of student achievement & progress data.
- Monitoring of attendance data.
- Training of all members on the board.
- The development of a community information session regarding school resourcing, classes structures and split classes.

Congratulations to all school board members for a successful 2023. I would like to thank Cate Carrol and Trinh Tucker for their contribution to the School Board, and wish them and their families well as they leave Melville PS.

Staff representatives	Melanie Osborne, Daniel Del Casale, Jenni Webster
Parent representatives	Michelle Testa, Cate Carroll, Jo Alilovic, Trinh Tucker, Jaylene Fritchley (Chair), Ben Fitzpatrick, Chenelle Wood
Community representative	Amir Tabei
Executive Officer	Ann-Marie Mutter

Jaylene Fritchley

School Board Chair

School P & C report

A remarkably successful year serving the school community, with the P&C striving to impact three key areas:

1. Community Engagement.
2. Enhancing Learning Environments and Resources.
3. Parental Involvement and Building Parent-Teacher Partnerships.

We cannot do anything without the support of our members and volunteers, and a special mention to our executive committee and office bearers:

President	Tim Salter
Vice President	Rebecca Storer
Secretary	Erin Morris
Treasurer	Darlene Yates
Executive Committee	Nick Walter, Aisling Hansen, Melinda Vaughan, Melanie Osborne
Fundraising	Rebecca Storer
Canteen	Erin Hinder

Many in our community will be unaware of the scale of contribution made by our outgoing Treasurer, Darlene Yates and Social and Fundraising Lead, Rebecca Storer. Thank you both for your service. We are glad

Rebecca Storer is remaining involved as Vice President. Erin Hinder (Canteen) is also moving on with our gratitude for her contribution.

A very warm welcome to our incoming Treasurer Joanne De Fillipo, Social & Fundraising Lead Linda Murrie, and Canteen Representative Fiona Conolly.

In 2023 the Melville Primary School P & C:

- Raised \$40,000 through fundraising events and activities including Colour Run, Car Park Raffles, Cake Stalls, Mango Fundraiser, Movie Night raffle, Containers for change, Election sausage sizzle.
- Contributed over \$13,000 to school projects and resources; \$2,500 on community education (Online Safety and Nutrition presentations), and over \$9,000 to various other initiatives.
- Further funds are earmarked for:
 - Outdoor landscaped learning / quiet space.
 - Solar panels for long term financial and environmental benefit.
 - Rainwater tanks for long term financial and environmental benefit.
 - Reading materials.
- Fostered community engagement and connected parents to the school by: School busy bees, MOMPS camps, Twilight Picnic, Online Awareness & Safety (Paul Litherland) and Dr Kyla Paediatric Nutrition information sessions and the Annual Parents Night.
- Supported the improvement of student outcomes by: Individual teacher consumable subsidy, Shaping Minds course fees and whiteboards, Wireless microphones, and replacing many of the out-of-date Readers (student reading materials).
- Updated the P&C Executive Committee structure, including defining roles, and drafted a Purpose and Strategy for 2023 - 2025 in consultation with the community and School Executive. We now have a baseline to support good governance – of how we make decisions. We will look to review this document through the middle of 2024 and engage further with the community to ensure representation of the families of Melville Primary School.
- Process implemented for organizing class groups and P&C Class Reps at the start of each year, with a Class WhatsApp Group created under a centrally managed WhatsApp community.
- Adopted the WACSSO P&C Meetings Code of Conduct.
- Secured a NFP grant from Microsoft providing us ten licenses of Microsoft 365 for no cost.
- Secured NFP no cost licensing for five licenses of Canva Professional.
- Secured @mpspac.org.au domain for email addresses for each Executive committee role, i.e., president@mpspac.org.au.
- Entered a partnership agreement with Humanitix Event platform with NFP ticket pricing, saving significant fees and ticketing costs for all future P&C events and unlocking new functionality in ticketing and payments on site at events.

A few final Thank Yous... To Melanie Osborne and the wonderful staff of Melville Primary School, thank you for a wonderful partnership in service of our community. To our amazing community members, all of you! 2024 is shaping up to be another momentous year with a stacked calendar of P&C events and opportunities for relationship building and community engagement. I encourage all of you to continue to, or start being involved in order that we may build an outstanding community to raise our children in. And let us have a magnificent time doing so!

Tim Salter

President – Melville Primary School Parents & Citizens Association Inc

Men of Melville Primary School (MOMPS) report

2023 was an exciting year for our MOMPS group. I would like to thank the following members for their formal contribution and many others who helped along the way this year.

President	Tim McNaught
Vice President	Nick Walter
Communications and coordination	Ra Hinder

MOMPS had another cracking year supporting Dad's activities with their kids, the school community and building camaraderie. I want to thank the small group of Dad's that coordinate the range of MOMPS activities, those that host the quarterly MOMPS meetings, help during the activities and those that attend and participate and make them a success. We are always keen to welcome new crew to the MOMPS meetings so please reach out if you are interested.

2023 MOMPS activities kicked off early with a working bee on 20 Jan and the Year 1 Dad's camp before the annual pizza night with guest presented Mike Dyson (Good Blokes Co - <https://www.goodblokes.co>) spending time with us sharing his research and anecdotes and guiding us through ways we could think about being better blokes.

We then got into the full swing of Dad's camps providing a terrific opportunity for Dad's to share some laughs with their kids whilst doing fun activities and trying to get them to bed on time. They were Kindy in March, Pre-primary in April, Year 2 in May, Year 3 in October, the Year 5 Rotto camp also in October and Year 4 camp in November.

Other activities included running the sausage sizzle for the May Movie night and social tour of the Running with Thieves Brewery thanks to Head Brewer Paul Gasmier. We finished the year with a final wrap up and farewell to some major contributors to MOMPS initiation and development over the past seven years whose children were graduating from Melville Primary to high school.

We are looking forward to a great 2024!

Tim McNaught
Coordinator

School Resourcing

Melville PS Financial Summary as of 31st December 2022.

INCOME - Dec 2023 (Verified Dec Cash)		
	Current Budget (\$)	Actual YTD (\$)
Carry Forward (Cash)	70,901	70,901
Carry Forward (Salary)	99,826	99,826
STUDENT-CENTRED FUNDING		
Per Student	5,520,616	5,520,616
School and Student Characteristics	868,430	868,430
Disability Adjustments	(41,145)	(41,145)
Targeted Initiatives	207,036	207,036
Operational Response Allocation	0	0
Total Funds:	6,554,937	6,554,937
TRANSFERS AND ADJUSTMENTS		
Regional Allocation	0	0
Transition Adjustment	0	0
School Transfers – Salary	(329,580)	(329,580)
School Transfers - Cash	325,880	325,880
Department Adjustments	0	0
Total Funds:	(3,700)	(3,700)
LOCALLY RAISED FUNDS (REVENUE)		
Voluntary Contributions	38,684	38,685
Charges and Fees	96,449	96,450
Fees from Facilities Hire	76,363	76,364
Fundraising/Donations/Sponsorships	13,375	13,375
Commonwealth Govt Revenues	0	0
Other State Govt/Local Govt Revenues	0	0
Revenue from CO, Regional Office and Other scho	2,912	2,912
Other Revenues	22,661	22,661
Transfer from Reserve or DGR	13,750	13,750
Residential Accommodation	0	0
Farm Revenue (Ag and Farm Schools only)	0	0
Camp School Fees (Camp Schools only)	0	0
Total Funds:	264,194	264,197
TOTAL	6,986,158	6,986,161

EXPENDITURE - Dec 2023 (Verified Dec Cash)		
	Current Budget (\$)	Actual YTD (\$)
SALARIES		
Appointed Staff	5,585,718	5,585,718
New Appointments	0	0
Casual Payments	592,098	592,098
Other Salary Expenditure	873	873
Total Funds:	6,178,689	6,178,689
GOODS AND SERVICES (CASH EXPENDITURE)		
Administration	34,630	31,564
Lease Payments	49,449	48,294
Utilities, Facilities and Maintenance	129,085	129,400
Buildings, Property and Equipment	54,404	51,736
Curriculum and Student Services	250,096	218,506
Professional Development	37,656	35,171
Transfer to Reserve	117,652	117,652
Other Expenditure	0	4
Payment to CO, Regional Office and Other schools	1,040	1,038
Residential Operations	0	0
Residential Boarding Fees to CO (Ag Colleges only)	0	0
Farm Operations (Ag and Farm Schools only)	0	0
Farm Revenue to CO (Ag and Farm Schools only)	0	0
Camp School Fees to CO (Camp Schools only)	0	0
Total Funds:	674,012	633,365
TOTAL	6,852,701	6,812,054

Melville Primary School Highlights





The Graduating Class of 2023





2023 • Melville Primary School **Year 6 Graduates**



Principal: Mrs Melanie Osborne

© Melville Primary 2023



2023 • Melville Primary School **Semester 1 Parliamentarians**



Front Row: Sophie Kingwell, Zac West, Koby King, Jasper Green, Fletcher Pasco, Esther Kingwell

Second Row: Mrs Melanie Osborne (Principal), Vesna Walton, Xavier Wharton-Street, Owen Depiazz, Indiana Larsen-Costelloe, Emily Martindale

Third Row: Mason Fairnie, Jimmy Moore, Olivia Evans, Jet Matassa, Ferg Collie

Absent: Scarlett Dixie, Bailee Testa

Principal: Mrs Melanie Osborne



70 Curtis Road,
Melville WA 6156

melville.ps@education.wa.edu.au
(08) 9263 1300

www.melvilleps.wa.edu.au