



# CORE IMPLEMENTATION STRATEGIES FOR 2015-2017



# MELVILLE PRIMARY SCHOOL BUSINESS PLAN 2015-2017

Our core implementation strategies (how we are going to achieve our targets) for 2015-2017 are identified in the table below.

AREA OF FOCUS	CORE IMPLEMENTATION STRATEGIES
<b>Excellence in Teaching &amp; Learning</b>	<ul style="list-style-type: none"> <li>Align staff development to system requirements, whole school priorities and individual needs</li> <li>Promote a range of teaching strategies to encompass whole body learning, intentional teaching and collaborative learning</li> <li>Embed the use of critical and creative thinking</li> <li>Implement the Australian Curriculum as advocated through SCISA</li> <li>Plan and maintain digital technologies</li> <li>Provide authentic opportunities for teacher and student self-reflection and goal setting</li> </ul>
<b>Partnerships</b>	<ul style="list-style-type: none"> <li>Maintain and strengthen our community relationships through informal and formal involvement</li> <li>Identify and communicate current and future directions of the school</li> <li>Communicate student development and needs regularly</li> <li>Promote consistency of key messages and values of the school</li> <li>Offer Speech and Occupational Therapy programs, including screening and therapy in the school</li> <li>Develop a new school logo which represents our values and demographic</li> <li>Ensure our communication tools are appropriate and beneficial</li> </ul>
<b>Supportive Environment</b>	<ul style="list-style-type: none"> <li>Cater for a variety of learning styles utilising expertise of Learning Support (LSC) And Gifted and Talented (G&amp;T) Coordinators</li> <li>Promote and utilise the student parliamentarian system</li> <li>Explicitly teach the 'You Can Do It' program across the school</li> <li>Utilise the student services team to assist with the wellbeing of students, teachers and staff</li> <li>Recognise and promote the contributions of community members</li> </ul>



**Successful Students**



70 Curtin Road Melville WA 6156  
 Phone (08) 9330 2255 | Fax (08) 9317 1274  
 melville.ps@education.wa.edu.au | www.melvilleps.wa.edu.au



[www.melvilleps.wa.edu.au](http://www.melvilleps.wa.edu.au)

# OUR COMMUNITY

Melville Primary School is a vibrant public primary school situated half way between the Perth CBD and the port city of Fremantle. We are a large metropolitan school strongly supported by parents and the wider community.

We believe in inclusive and holistic teaching and learning ensuring the developmental needs of all our students are met.

The expectations and values of the school community are focused on academic rigour, expansion of learning opportunities, particularly in the Arts, as well as developing social and civic responsibility.



# OUR PURPOSE

To provide an inclusive, stimulating and collaborative learning environment that nurtures students to achieve their potential.

# OUR PRIORITIES

## Excellence in Teaching & Learning

Meaningful learning and assessment derived from effective pedagogy\* leads to personal success.

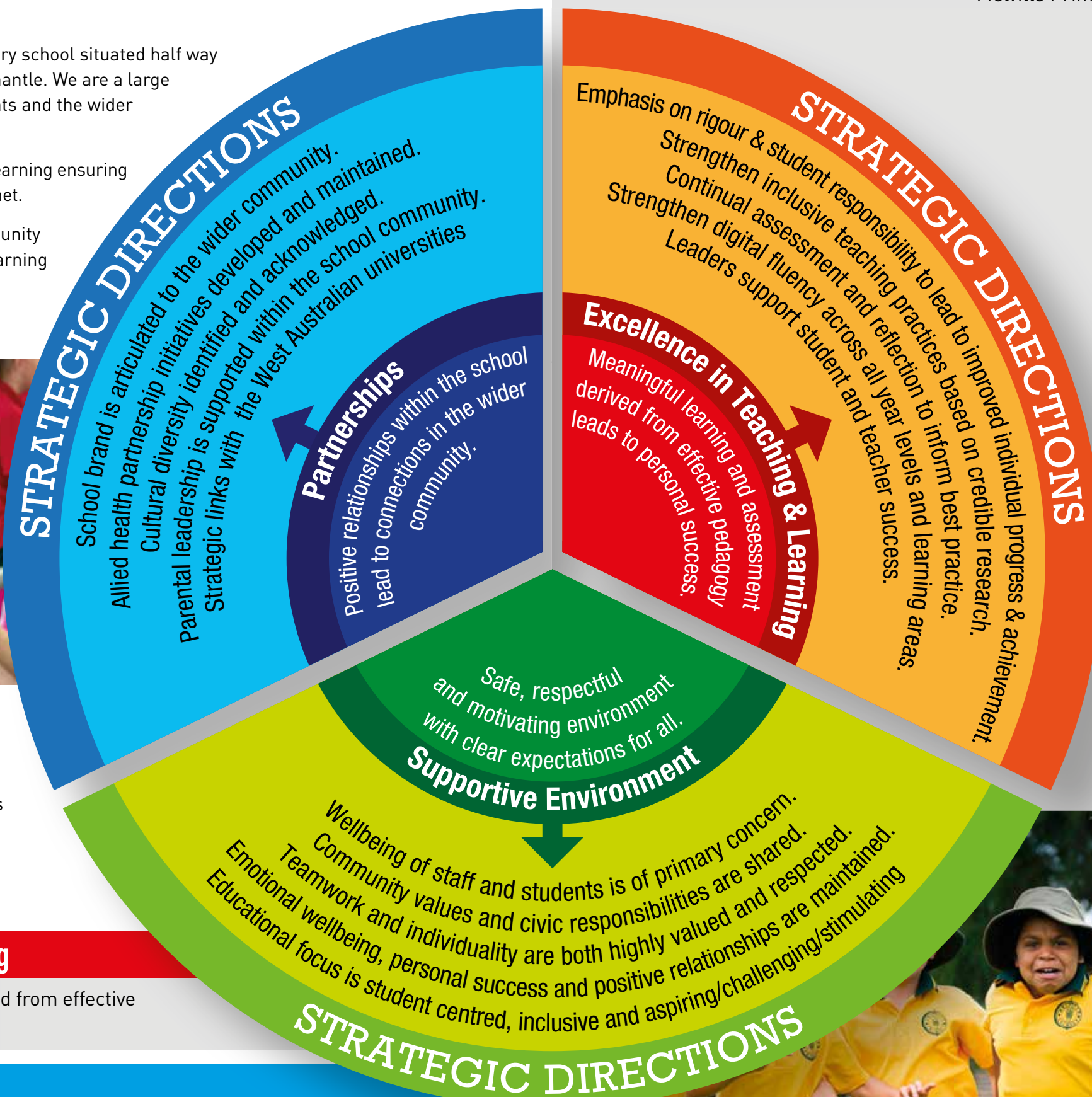
## Partnerships

Positive relationships within the school leads to connections in the wider community.

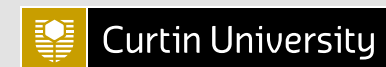
## Supportive Environment

A safe, respectful and motivating environment is pursued.

\*Pedagogy: The science, profession of theory of teaching



Melville Primary School currently has affiliations and close links with the following universities.



### COMMUNITY EXPERTISE SHARED AND VALUED AT THE SCHOOL THROUGH:

- Multi Lit Program
- School's Rock
- Tennis Coaching
- Specialist Science
- P&C
- School Board
- Speech & Occupational Therapists
- Chaplain
- Rainbow Programs



# MELVILLE PRIMARY SCHOOL'S MILESTONES & TARGETS FOR 2015-2017.



**TARGETS**

- Year 3 & 5 stable cohort from NAPLAN\* results will demonstrate positive growth in the percentage of students with moderate, high and very high progress
- Year 3 & 5 English and Mathematics NAPLAN\* results will be at or above 'like schools'
- Classroom planning is connected to operational and business plans and measured through the common assessment tasks and performance management

**MILESTONES**

- Promote a supportive and collegiate professional environment in which performance management is viewed as ongoing self-development and reflection using the AITSL\* Professional Standards
- Implementation of the Australian Curriculum is in accordance with the Department of Education WA through SCSA
- Inclusive education and holistic teaching is clearly evident at all levels of schooling inside and outside the classroom
- Evidence of student engagement in self-reflection and goal setting to identify their strengths and focus areas
- ICT\* skills are clearly evident in the teaching and learning programs throughout the school.
- Continued positive results in the NSOS\*



**TARGETS**

- Affirmation of partnerships through the biennial NSOS\*
- Positive School Board feedback regarding use of resources, school performance, and school self-assessment is reflected in the minutes and survey results

**MILESTONES**

- NSOS survey data is analysed and areas of concern are addressed.
- SCSA General Capabilities and cross curricular priorities are evident in teaching and student learning
- Learning experiences and events celebrate diversity and inclusivity.
- Monitor number of students accessing school therapy services and the flow on effect to classroom performance
- Working collaboratively with parents as partners to identify individual student needs



**TARGETS**

- Continue to maintain and enhance our facilities to promote learning & playing beyond the classroom walls
- Increased presence and involvement in school events by the community
- NQS\* audit of quality areas

**MILESTONES**

- Commitment to the school's beliefs and values is consistently modelled by all
- Parent and wider community contributions are sought & valued
- Sustainability and respect for the environment are explicitly taught
- The teaching of the five value keys of the 'You Can Do It' program is evident in school life

\*NQS National Quality Standard  
\*NAPLAN National Assessment Program Literacy and Numeracy  
\*AITSL Australian Institute for Teaching and School Leaders  
\*ICT Information and Communication Technology  
\*SCSA School Curriculum and Standards Authority  
\*NSOS National School Opinion Survey  
\*G&T Gifted and Talented  
\*LSC Learning Support Co-ordinator

### OUR SCHOOL'S ENVIRONMENTAL FOCUS IN 2015-2017

- Robin Hood Project
- Early Childhood nature playground
- Vegetable garden
- Resources centre
- Sustainability Programs